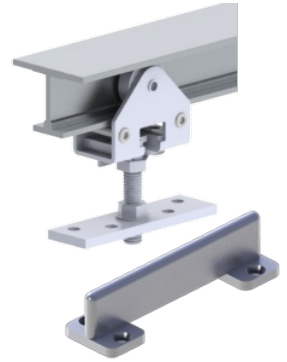


9110 Series

Heavy Duty Aluminum I-Beam Track and Hardware

Notes:

- For doors 1" (25.4 mm) thick or greater
- Up to 175 pounds per door
- Track is extruded aluminum jump-proof style with "I" beam track
- Hangers have 1" (25.4 mm) diameter wheels
- Compares to Grant 1210/1230 Series
- Two (2) pieces required per by pass



PRODUCT SPECIFICATIONS

PACKAGED SETS:

- 9110-60 - 5' (1524 mm) Pocket Set - For one 2'6" (762 mm) door
- 9110-72 - 6' (1839 mm) Pocket Set - For one 3'0" (914 mm) door
- 9110-84 - 7' (2134 mm) Pocket Set - For one 3'6" (1067 mm) door
- 9110-96 - 8' (2438 mm) Pocket Set - For one 4'0" (1219 mm) door
- 9110-120 - 10' (3048 mm) Pocket Set - For one 5'0" (1529 mm) door
- 9110-144 - 12' (3658 mm) Pocket Set - For one 6'0" (1829 mm) door

INCLUDES:

- 9101 track and 9109 parts bag (use two tracks for by-pass)

CONFORMS TO:

- ANSI A156.14/Type: D8681, D8711

PRODUCT SIZE OPTIONS

PART #	DESCRIPTION
9110-60	5' (1524 mm) Pocket Door Set for 2'6" (762 mm) Door
9110-72	6' (1829 mm) Pocket Door Set for 3' (914 mm) Door
9110-84	7' (2133 mm) Pocket Door Set for 3'6" (1067 mm) Door
9110-96	8' (2438 mm) Pocket Door Set for 4' (1219 mm) Door
9110-144	12' (3657 mm) Pocket Door Set for 6' (1829 mm) Door

PART #	DESCRIPTION
9110-60	5' (1524 mm) By-Pass Set for two 2'6" (762 mm) Doors
9110-72	6' (1829 mm) By-Pass Set for two 3'0" (914 mm) Doors
9110-84	7' (2134 mm) By-Pass Set for two 3'6" (1067 mm) Doors
9110-96	8' (2438 mm) By-Pass Set for two 4'0" (1219 mm) Doors
9110-144	12' (3658 mm) By-Pass Set for 6'0" (1829 mm) Doors